

DEPARTMENT OF THE ARMY TECHNICAL MANUAL

**ORGANIZATIONAL MAINTENANCE
REPAIR PARTS AND SPECIAL
TOOLS LIST**

**TEST SET, SIGNAL CONVERTER
AN/ASM-416**

FSN 6625-463-4013

Current as of 15 May 1952

Headquarters, Department of the Army, Washington, D.C.

16 June 1972

	Page
SECTION I. INTRODUCTION	1-1
II. REPAIR PARTS (ORGANIZATIONAL)	2-1
GROUP 101 Signal Converter Test Set	
III. INDEX-FEDERAL STOCK NUMBER AND REFERENCE NUMBER CROSS-REFERENCE TO FIGURE AND ITEM NUMBER	3 - 1

SECTION I

INTRODUCTION

1. scope

This manual lists repair parts required for the performance of organizational maintenance of the Test Set, Signal Converter AN/ASM-416.

2. General

This Repair Parts List is divided into the following sections :

a. Prescribed Load Allowance (Not Applicable).

b. **Repair** Parts--Section II. A list of repair parts authorized for the performance of maintenance at the organizational level.

c. Special Tools List (Not Applicable).

d. **Federal Stock Number and Reference Number Index-Section III.** A list, in ascending numerical sequence, of Federal Stock Numbers appearing in the listing, followed by a list, in alphanumeric sequence, of reference numbers appearing in the listing. Federal Stock Numbers and Reference Numbers are cross-referenced to each illustration figure and item number appearance.

3. Explanation of Columns

The following provides an explanation of columns found in the tabular listing.

a. Source, Maintenance and Recoverability Codes (SMR).

(1) **Source code.** Indicates the source for the listed items. Source codes are :

Code	Explanation
P	Repair parts, special tools and test equipment supplied from the GSA/DSA, or Army supply system and authorized for use at indicated maintenance categories.
P2	Repair parts, special tools and test equipment which are procured and stocked for insurance purposes because the combat or military essentiality of the end item dictates that a minimum quantity be available in the supply system.
P9	Assigned to items which are NSA design

Code

Explanation

controlled : Unique repair parts, special tools, test, measuring and diagnostic equipment, which are stocked and supplied by the Army COMSEC logistic system, and which are not subject to the provisions of AR 380-41.

P10-Assigned to items which are NSA design controlled : Special tools, test, measuring and diagnostic equipment for COMSEC support, which are accountable under the provisions of AR 380-41, and which are stocked and supplied by the Army COMSEC logistics system.

M-Repair parts which are not procured or stocked, but are to be manufactured in indicated maintenance levels.

A-Assemblies which are not procured or stocked as such, but are made up of two or more units. Such component units carry individual stock numbers and descriptions, are procured and stocked separately and **can** be assembled to form the required assembly at indicated maintenance categories.

X-Parts and assemblies which are not procured or stocked and **the** mortality of which normally is below **that** of **the** applicable end item or component. **The** failure of such part or assembly should result in retirement of the **end item** from the supply system.

XI-Repair parts which are not procured or stocked. **The** requirement for such items will be filled by use of the next higher assembly or component.

X2—Repair parts, special tools and test equipment which are not stocked and have no foreseen mortality. The indicated maintenance category requiring such repair parts will attempt to obtain same through cannibalization or salvage. The item may be requisitioned, with exception data, from the end item manager for immediate use.

Code **Explanation**
G—Major assemblies that are procured with PEMA funds for initial issue only as exchange assemblies at DSU and GSU level. These assemblies will not be stocked above DS and GS level or returned to depot supply level.

(2) **Maintenance code.** Indicates the lowest category of maintenance authorized to install the repair part and or use the special tool or test equipment for each application. Capabilities of higher maintenance categories are considered equal or better.

Maintenance codes are:

Code	Explanation
C	Crew Operator
O	Organizational maintenance
F	Direct support maintenance
H	General support maintenance
D	Depot maintenance

(3) **Recoverability code.** Indicates whether unserviceable items should be returned for recovery or salvage. Items not coded are nonrecoverable. Recoverability codes are:

Code	Explanation
R	Repair parts (assemblies and components), special tools and test equipment which are considered economically repairable at direct and general support maintenance levels. When the item is no longer economically repairable, it normally is disposed of at the GS level. When supply considerations dictate, some of these repair parts may be listed for automatic return to supply for depot level repair as set forth in AR 710-50. When so listed, they will be replaced by supply on an exchange basis.
S	Repair parts, special tools and test equipment, and assemblies which are economically repairable at DS and GS activities and which normally are furnished by supply on an exchange basis. When items are determined by a GSU to be uneconomically repairable, they will be evacuated to a depot for evaluation and analysis before final disposition.
T	High dollar value recoverable repair parts, special tools and test equipment which are subject to special handling and are issued on an exchange basis. Such items will be repaired or overhauled at depot maintenance activities only. No repair may be accomplished at lower levels.
U	Repair parts, special tools and test equipment specifically selected for salvage by reclamation units because of precious

metal content, critical materials, high dollar value, or reusable casings or castings.

b. Federal Stock Number. Indicates the Federal stock number assigned to the item and will be used for requisitioning purposes.

c. Description. Indicates the Federal item name and a minimum description required to identify the item. The last line indicates the reference number followed by the applicable Federal Supply code for Manufacturer (FSCM) in parentheses. The FSCM is used as an element in item identification to designate manufacturer or distributor or Government agency, etc, and is identified in SB 708-42.

d. Unit of Measure (U/M). Indicates the standard or basic quantity by which the listed item is used in performing the actual maintenance function. This measure is expressed by a two-character alphabetical abbreviation, e.g., ea., in., pr., etc. When the unit of measure differs from the unit of issue, the lowest unit of issue that will satisfy the required units of measure will be requisitioned.

e. Quantity Incorporated in Unit. Indicates the quantity of the item used in the breakout shown on the illustration figure, which is prepared for a functional group, subfunctional group, or an assembly. A "V" appearing in this column in lieu of a quantity indicates that no specific quantity is applicable, e.g., shims, spacers, etc.

f. 15-Day Organizational Maintenance Allowances. The allowance columns are divided into four subcolumns. An asterisk in these columns opposite the first appearance, and each subsequent appearance, of each item indicates the item is authorized on an "as required" basis. Repair parts stockage at the organizational levels will be based on demand and determined in accordance with AR 735-35.

g. Illustration. This column is divided as follows:

(1) **Figure Number.** Indicates the figure number of the illustration in which the item is shown.

(2) **Item Number.** Indicates the callout number used to reference the item on the illustration.

Special Information

a. Split coding such as AH, MD, PH etc, found in the source column indicate parts which require manufacture, assembly, or stockage at a category higher than that authorized to install the item.

For example, an item coded AH-O denotes the source of the item to be assembled (A) at the General Support Level (H) and authorized for installation at the Organizational level (O).

b. The following publications are applicable to the installation and maintenance of the AN ASM-416.

TM 11-5821-288-25	Organizational, Direct Support. General Support and Depot Maintenance Manual for Signal Data Converter CV-2808(V) ASH-19
TM 11-5821-289-25	Organizational, Direct Support. General Support and Depot Maintenance Manual for Signal Data Converter CV-2809 ASH-19
TM 11-5821-290-25	Organizational, Direct Support, General Support and Depot Maintenance Manual for Signal Data Converter CV-2807(V) ASH-19
TM 11-6625-2411-12	Organizational Maintenance Manual for Signal Converter Test Set AN/ASM-416

5. How to Locate Repair Parts

a. When Federal stock number or reference number is unknown:

(1) First. Using the Table of Contents determine the functional group within which the repair part belongs. Note the figure number opposite the particular group.

(2) Second. Identify the repair part on the illustration. Illustrations are shown at the end

of the tabular list (Section II). Stock the figure number and item number.

(3) Third. Find the figure number and item number in column *i*' of the tabular list (Section II). (Item numbers are in ascending numeric order.)

b. When Federal Stock number or reference number is known :

(1) First. Using the Index of Federal Stock Numbers and reference numbers find the pertinent Federal stock number or reference number and note the figure and item number. This index is in ascending FSN sequence followed by a list of reference numbers in ascending alpha-numeric sequence, cross referenced to the illustration figure number and item number.

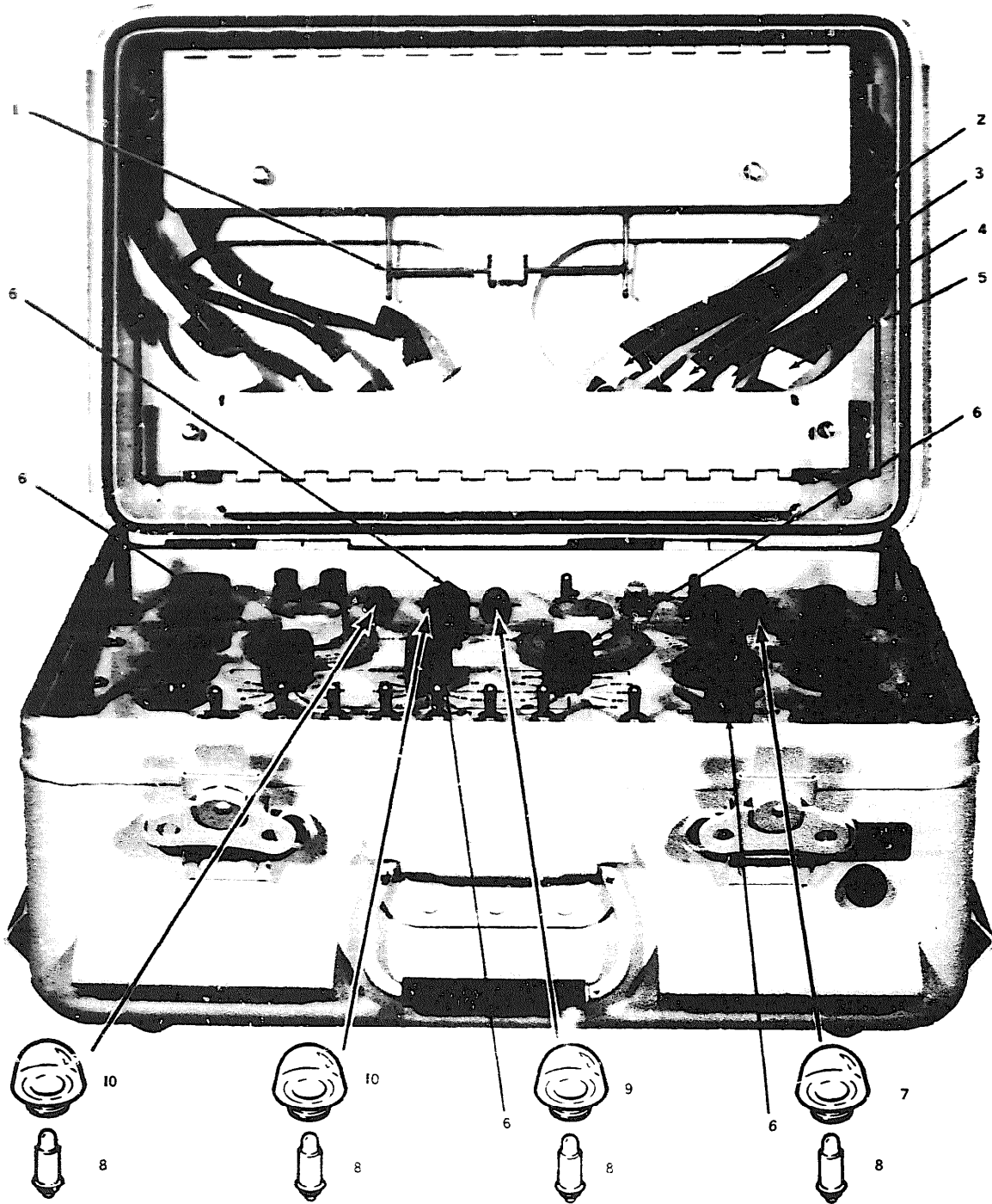
(2) Second. Using the Repair Parts List (Section II), find the illustration figure number and item number referenced in the index of Federal Stock numbers and reference numbers. Figure and item numbers shown in Column 7 are in ascending numerical order.

6. Abbreviations

Abbreviation	Explanation
assy	assembly
Cd	card
ckt	circuit
incand	incandescent
mintr	miniature
V	voltage

7. Recommendations for Maintenance Publication Improvements

The reporting of errors, omissions, and recommendations for improving this publication by the individual user is encouraged. Reports should be submitted on DA Form 2028 (Recommended changes to Publications) and forwarded direct to Commanding General, U. S. Army Electronics Command, ATTN: AMSEL-MA-A, Fort Monmouth, N.J., 07703.



EL6625-2411-20P-TM-1

By Order of the Secretary of the Army :

Official :

VERNE L. BOWERS,
*Major General, United States Army,
The Adjutant General.*

W. C. WESTMORELAND,
*General, United States Army,
Chief of Staff.*

Distribution :

To be distributed in accordance with D A Form 12-36 (qty rqr block no. 197), Direct/General Support requirements for avionics literature, AN/ASH- 1 9.

SECTION II. REPAIR PARTS FOR ORGANIZATIONAL MAINTENANCE

(1) PART CODE	(2) FEDERAL STOCK NUMBER	(3) DESCRIPTION	(4) USABLE OR CODE	(5) UNIT OF MEAS	(6) 15-DAY ORGANIZATIONAL MAINTENANCE ACT				(7) ILLUSTRATIONS		
					(5) QTY INC IN UNIT	(6)				(8) FIG NO	(9) ITEM NO OR REFERENCE DESIGNATION
						(6) 1-5	(6) 6-20	(6) 21-50	(6) 51-100		
		TEST SET, SIGNAL CONVERTER AN/ASM-416									
P O	5120-433-0651	EXTRACTOR, CRT CD ASSY 2147985-501 (49671)		EA	1	*	*	*	*	1	1
Alt O		CABLE ASSY 2147984-501 (49671)		EA	1	*	*	*	*	1	2
Alt O		CABLE ASSY 2147985-501 (49671)		EA	1	*	*	*	*	1	3
Alt O		CABLE ASSY 2147986-501 (49671)		EA	1	*	*	*	*	1	4
Alt O		CABLE ASSY 2147987-501 (49671)		EA	1	*	*	*	*	1	5
P O	5355-589-8940	KNOB, CONTROL MS91528-2K2B (96906)		EA	5	*	*	*	*	1	6
P O		LENS, GREEN P24-108 (87034)		EA	1	*	*	*	*	1	7
P O	6240-763-7744	LAMP, INCAND, MINTR 28V MS18209-387 (96906)		EA	4	*	*	*	*	1	8
P O		LENS, YELLOW P24-109 (87034)		EA	1	*	*	*	*	1	9
P O		LENS, RED P24-107 (87034)		EA	2	*	*	*	*	1	10

SECTION III INDEX-FEDERAL STOCK NUMBER AND REFERENCE NUMBER CROSS-REFERENCE
TO FIGURE & ITEM NUMBER

STOCK NUMBER	FIG NO.	ITEM NO.
5120-433-8351	1	1
5355-550-8343	1	6

STOCK NUMBER	FIG NO.	ITEM NO.
6240-763-7744	1	8
6625-463-4014	1	2
6625-483-4015	1	3

STOCK NUMBER	FIG NO.	ITEM NO.
6625-453-4016	1	4
6625-463-4054	1	5

REFERENCE NO.	MFG CODE	FIG NO.	ITEM NO.
MS18200-387	96906	1	8
MS01628-2K2B	96906	1	6
P24-107	87034	1	10

REFERENCE NO.	MFG CODE	FIG NO.	ITEM NO.
P24-108	87034	1	7
P24-109	87034	1	9
2147984-501	49671	1	2
2147985-501	49671	1	3

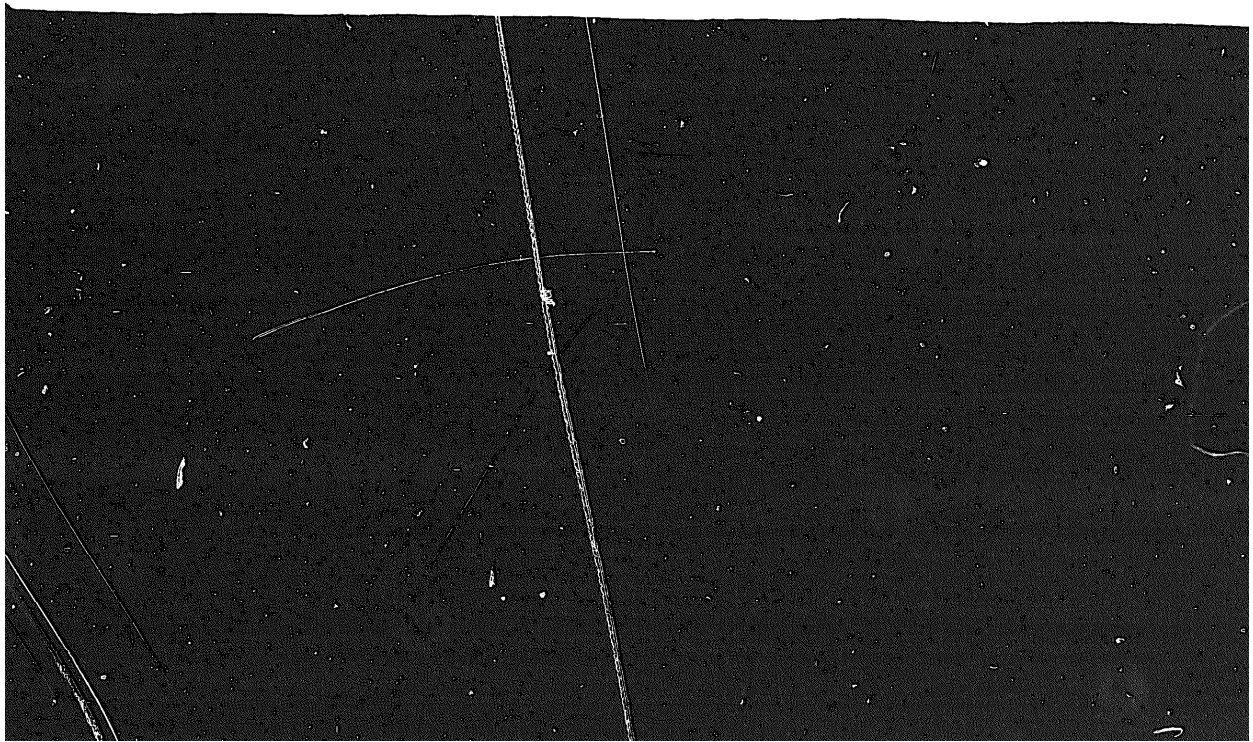
REFERENCE NO.	MFG CODE	FIG NO.	ITEM NO.
2147986-501	49671	1	4
2147987-501	49671	1	5
2147995-501	49671	1	1

END

01-07-83

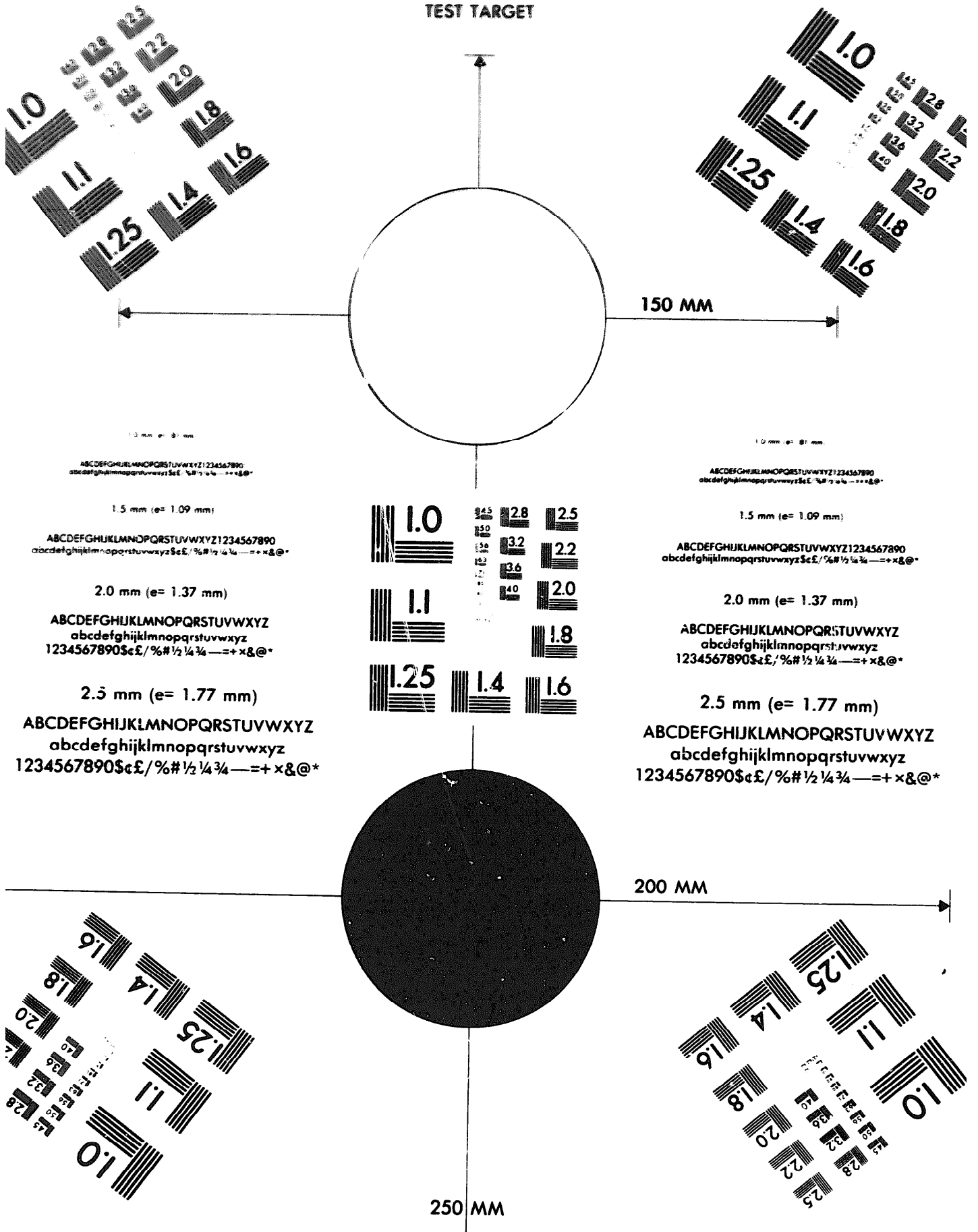
DATE





DEPARTMENT OF THE ARMY

MICROFORM
TEST TARGET



150 MM

200 MM

250 MM

ABCDEFGHIJKLMN OPQRSTUVWXYZ 1234567890
abcdefghijklmnopqrstuvwxyz \$%& / # 1/2 1/4 3/4 — = + x & @ *

1.5 mm (e= 1.09 mm)

ABCDEFGHIJKLMN OPQRSTUVWXYZ 1234567890
abcdefghijklmnopqrstuvwxyz \$%& / # 1/2 1/4 3/4 — = + x & @ *

2.0 mm (e= 1.37 mm)

ABCDEFGHIJKLMN OPQRSTUVWXYZ
abcdefghijklmnopqrstuvwxyz
1234567890 \$%& / # 1/2 1/4 3/4 — = + x & @ *

2.5 mm (e= 1.77 mm)

ABCDEFGHIJKLMN OPQRSTUVWXYZ
abcdefghijklmnopqrstuvwxyz
1234567890 \$%& / # 1/2 1/4 3/4 — = + x & @ *

ABCDEFGHIJKLMN OPQRSTUVWXYZ 1234567890
abcdefghijklmnopqrstuvwxyz \$%& / # 1/2 1/4 3/4 — = + x & @ *

1.5 mm (e= 1.09 mm)

ABCDEFGHIJKLMN OPQRSTUVWXYZ 1234567890
abcdefghijklmnopqrstuvwxyz \$%& / # 1/2 1/4 3/4 — = + x & @ *

2.0 mm (e= 1.37 mm)

ABCDEFGHIJKLMN OPQRSTUVWXYZ
abcdefghijklmnopqrstuvwxyz
1234567890 \$%& / # 1/2 1/4 3/4 — = + x & @ *

2.5 mm (e= 1.77 mm)

ABCDEFGHIJKLMN OPQRSTUVWXYZ
abcdefghijklmnopqrstuvwxyz
1234567890 \$%& / # 1/2 1/4 3/4 — = + x & @ *